



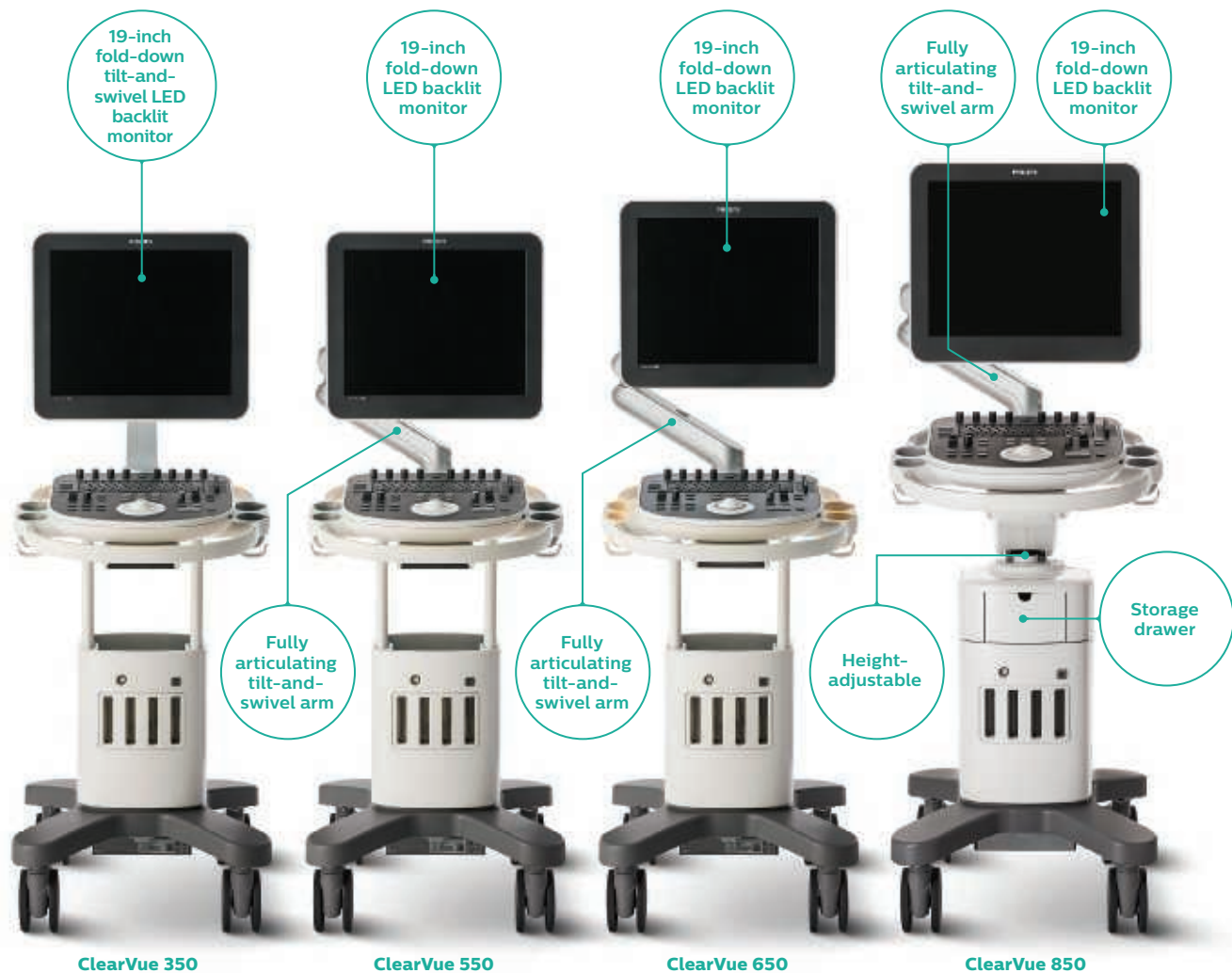
**PHILIPS**

*ClearVue*

Ultrasound

The **versatile**  
performer

Philips ClearVue ultrasound series



One look at the Philips ClearVue ultrasound series and you'll see the smooth, graceful lines and elegant design that hint at how Philips imaging systems will change your image. Sleek on the outside, and packed with performance features on the inside, Philips ClearVue series with Active Array technology offers image quality designed to enhance diagnostic confidence, features that are sophisticated enough to be simple, and advances in ease of use and reliability.

### Stunning image quality

Active Array technology	Integrates key imaging technologies into the transducer for superb image quality in a high-performing system.
3D/4D imaging	Color 3D. Able to acquire and display up to 40 volumes per second in 4D.
Broadband beamforming and advanced signal processing	Acquires and processes the entire tissue signature for premium class tissue differentiation across multiple patient types.
Tissue Harmonic Imaging with pulse inversion technology	Reduces many artifacts while preserving tissue definition and resolution.
XRES adaptive image processing	Reduces speckle noise artifacts for better margin definition and image clarity.
SonoCT image compounding	Reduces artifacts, improves contrast resolution, and allows irregular borders to be more readily visualized.
Panoramic and Freehand 3D imaging	Perform extended field-of-view imaging and freehand 3D surface rendering for enhanced exam documentation and communication.
Fetal STIC	Useful for easy detection of fetal heart anomalies during routine obstetrical exams.

### Smart and intuitive

Intuitive user interface	Provides direct access to the controls you use most often, speeding exams and improving workflow.
Advanced system automation (2D, color and PW Doppler, iSCAN options, 2D OPT, High Q, intelligent Doppler, adaptive Doppler, adaptive color Doppler)	Quick one-button system performance optimization streamlines your workflow, improves patient throughput, and increases exam consistency.
SmartExam protocols	Exam system-guided protocols enhance performance, increase consistency, and reduce exam time.
Auto Face Reveal	Detects a sphere representing the fetal skull in three dimensions and sculpts away the overlying tissues (3D trim) to reveal the baby face in one button touch.
OB Biometry Assist	An assistant tool which enables quick completion of fetal biometry measurements BPD, HC, OFD, AC and FL.*
Configurable reports and analysis	Perform customized in-depth clinical analysis and reporting for enhanced communication of results.
Support that boosts productivity**	Where available, advanced serviceability features and value-added services such as Remote Desktop, Proactive Monitoring, and Remote Service Network boost productivity and promote uptime.
Barcode scanner	Allows easy entry of patient data.
DICOM networking option	Provides Ethernet connection to DICOM networks for PACS viewing and archiving capabilities.

### Designed around you

Large high-resolution LCD color monitor	ClearVue 850 has a height-adjustable console. ClearVue 550, 650, and 850 feature a 19" color monitor mounted on a fully articulating tilt-and-swivel arm. ClearVue 350's 19" color monitor is mounted on a tilt-and-swivel arm.
Lightweight for easy maneuverability	At just 52 kg/115 lb, ClearVue is easy to maneuver.
A green product	Power consumption is a low 450 VA, to help you save on energy costs. And its low heat dissipation is ideal for smaller rooms.

\* Available in select models.

\*\* Not all services are available in all geographies and require service contract coverage.



The sleek control panel is designed for intuitive use.

Proprietary Active Array technology provides superb image quality for confident diagnosis.



#### Head to toe, versatility is yours

Abdominal	C5-2, S4-1, V6-2
Small parts and superficial	L12-4, L12-5
Pediatric head and hips	C5-2, S4-1
Musculoskeletal	L12-4, L12-5
Urology and prostate	3D9-3v, C5-2, C9-4v, V6-2
Obstetrics	3D9-3v, C5-2, C9-4v, S4-1, V6-2
Gynecology and fertility	3D9-3v, C5-2, C9-4v, S4-1, V6-2
Cerebrovascular and peripheral vascular	C5-2, L12-4, L12-5
Transcranial Doppler	S4-1
Adult and pediatric cardiac	S4-1, D2cwc

Presets help leverage transducer strengths, and four connectors allow users to quickly switch transducers when needed.

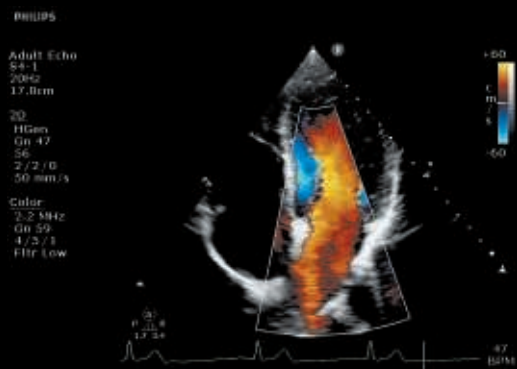




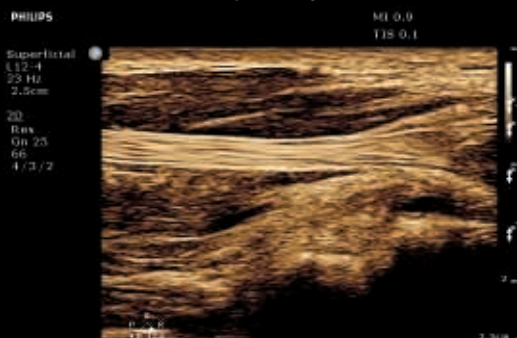
Fetal face and thumb



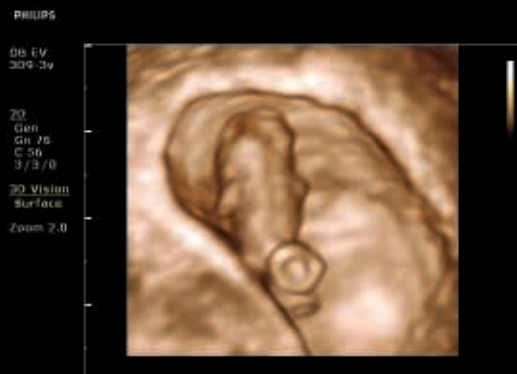
Liver parenchyma



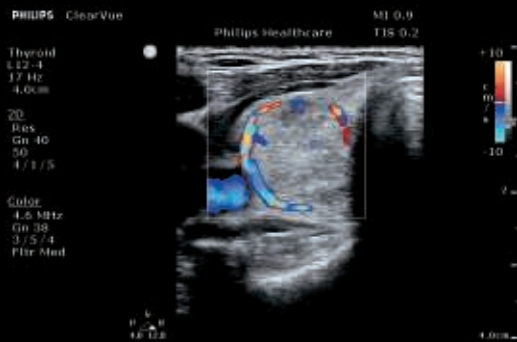
Apical four-chamber



Thenar tendons



Eight-week fetus and yolk sac



Thyroid mass with peripheral vasculature



© 2017 Koninklijke Philips N.V. All rights are reserved.  
Philips reserves the right to make changes in specifications and/or to discontinue  
any product at any time without notice or obligation and will not be liable for  
any consequences resulting from the use of this publication. Trademarks are  
the property of Koninklijke Philips N.V. or their respective owners.

[www.philips.com/ClearVue](http://www.philips.com/ClearVue)

Printed in The Netherlands.  
4522 991 29311 \* JUL 2017