



PHILIPS

Ultrasound

CX50 POC

Premium performance compact ultrasound

Philips CX50 POC CompactXtreme ultrasound system
for regional anesthesia and pain medicine

Philips CX50 POC CompactXtreme system for regional anesthesia and pain medicine



“I need to clearly and quickly see anatomy, nerve and needle, especially for my technically difficult patients and advanced blocks. I need an ultrasound system that physically fits in my environment, easily goes where I need it, and provides the imaging performance so I can confidently care for all my patients.”

Now you can be confident that you are getting exceptional image quality for your ultrasound-guided nerve blocks and procedures, even on your most technically challenging patients. Philips, a leader in cutting-edge ultrasound development, has integrated premium, innovative technologies into the CX50 POC system to address the need for premium class performance in a compact ultrasound system.



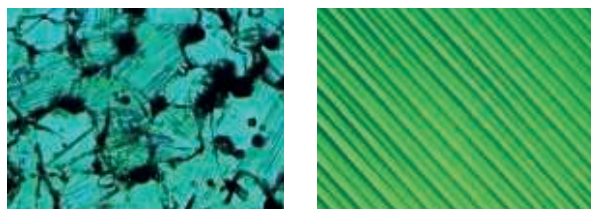
Premium class performance in a compact ultrasound system

Extreme performance is built into the CX50 POC system with clinically proven premium technologies. The CX50 POC has exceptional image quality, giving you the ability to easily and confidently visualize the sonoanatomy, quickly find the nerve, and see the needle throughout the procedure.

PureWave goes portable

PureWave technology has been integrated into the CX50 POC CompactXtreme system. PureWave crystals have virtually perfect uniformity for greater bandwidth and twice the efficiency of conventional ceramic materials. Over a million ultrasound exams have benefited from PureWave's exceptional penetration and far-field resolution.

PureWave excels on deep blocks and technically difficult patients, providing excellent 2D image quality. Now you can take advantage of PureWave's image quality in your regional anesthesia and pain medicine practice.



Conventional (x800) **PureWave** (x800)

PureWave crystals have virtually perfect uniformity for greater bandwidth and twice the efficiency of conventional ceramic materials. The result is excellent imaging and Doppler performance.

Needle visualization technology

Confidently and quickly see the needle with the CX50 POC system's needle visualization capabilities. The needle is enhanced in the image display without degrading surrounding tissue, allowing exceptional visibility of the needle and neural sonoanatomy at the same time.

SonoCT and XRES

Philips SonoCT real-time compound imaging displays striking levels of tissue differentiation that are virtually free of artifact. Advanced XRES adaptive image processing reduces speckle, haze and clutter. When SonoCT and XRES work in tandem, the result is outstanding image quality and enhanced delineation of tissue layers and structures – making it as easy as possible to see the sonoanatomy in order to complete a procedure with confidence.

Designed for speed and efficiency

The CX50 POC's compact size allows you to effortlessly maneuver in the confined space of the perioperative environment. And battery operation means you can quickly begin a procedure. The 15" high resolution LCD with built-in ambient light compensation provides excellent viewing in varied environments. Tissue Specific Imaging optimizes hundreds of scanning parameters to the specific transducer and anatomy. Image optimization is simple with iSCAN, a one-button step to getting a high quality image, and it's easy to steer the image to best visualize the needle and anatomy.

Premium performance across your patient population

Transducers to meet your needs

The CX50 POC transducers support a wide range of ultrasound-guided procedures, as well as adult echo and TEE. Select the best transducer for your procedure based on the type of block, patient size and technical difficulty.

CX50 POC system's array of transducers provides premium performance for your growing regional anesthesia and pain management program. Applications include nerve blocks, MSK, vascular access, lung, echo, and FAST.

- L12-3 broadband linear array
- L15-7io broadband compact linear array
- C5-1 PureWave curved array
- S5-1 PureWave sector array
- X7-2t PureWave TEE

Compact ultrasound designed for your environment

Take the CX50 POC where you need it. On cart it allows for easy mobility and effortless maneuverability in the perioperative environment as well as throughout the hospital. The CX50 POC system is the ideal solution for multiple-site support. With its convenient travel case, you can easily take the CX50 POC to satellite locations to support nerve blocks wherever needed.

The gold standard for security

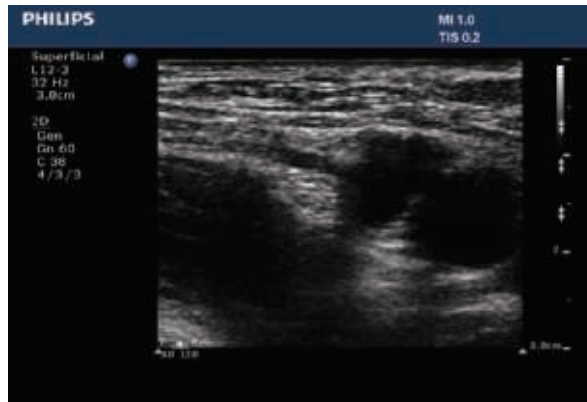
Philips recognizes the importance of securing your ultrasound system and protecting your patient data. The security feature on the CX50 POC is a defense-in-depth strategy that comprises five layers: firewall, operating system hardening, malware protection, access controls, and patient data encryption. Each of these layers plays an important role in helping you thwart hackers, defend against malware, and prevent unauthorized access.



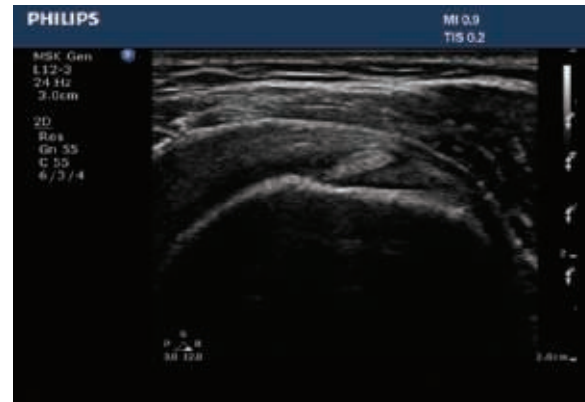
The system and cart are combined into an ergonomic unit that is slim, lightweight, and highly mobile.

It can be swiveled and locked so you are set up quickly anywhere you need premium performance.

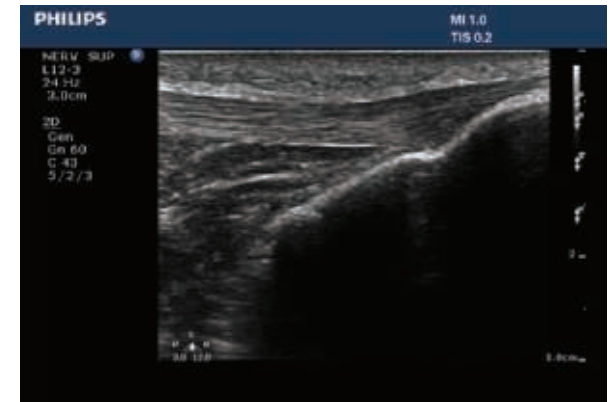
Philips **exceptional** image quality



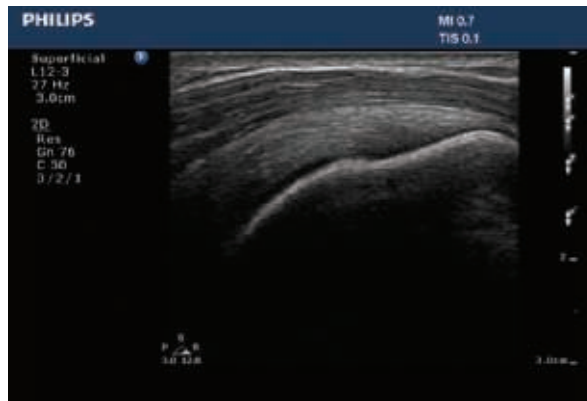
Femoral nerve



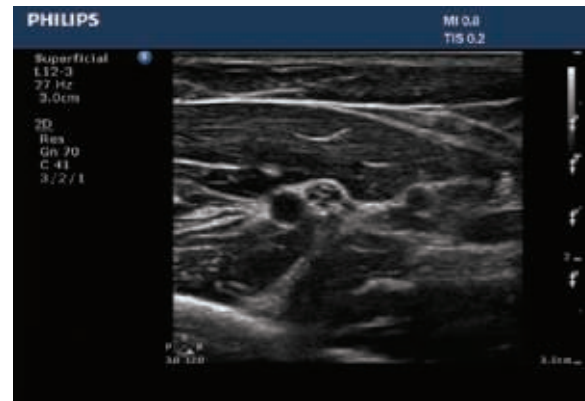
Biceps tendon



Inferior aspect of the tibial tendon



Supraspinatus tendon



Axillary artery and nerve plexus



Sciatic nerve at popliteal level

Count on us as your patients count on you

The value of a Philips ultrasound system extends far beyond technology. With every CX50 POC system, you get access to our award-winning service organization,* competitive financing, and educational tools that help you get the most out of your system.**

Always there, always on

We work as one with your team to keep your CX50 POC system running smoothly.

On-cart transducer test provides confidence in your transducer quality

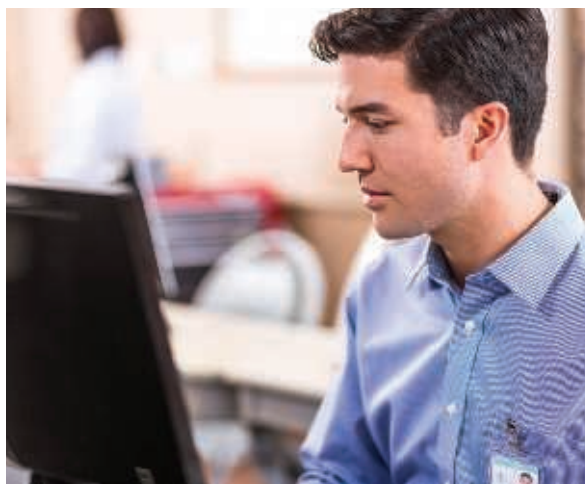
On-cart transducer test provides a non-phantom method to test CX50 POC transducers at any time, giving you confidence in your diagnostic information.

Remote service capabilities maximize efficiency

Easy, rapid technical and clinical support through remote desktop enables a virtual visit with a Philips expert.

Proactive monitoring solutions maximize uptime

Philips proactive monitoring increases system availability by predicting potential system disruptions and proactively acting on them, letting you focus on what is most important – your patients.



Immediate support request at your fingertips

The support request button allows you to enter a request directly from the control panel, for a fast and convenient communication mechanism with Philips experts without leaving your patient, minimizing workflow interruption.

Sharing risk, increasing the return on your investment

Partner with us to maximize utilization and uptime of your CX50 POC system.

Utilization reports

Data intelligence tools can help you make informed decisions to improve workflow, deliver quality patient care, and decrease the total cost of ownership. This ultrasound utilization tool provides individual transducer usage and the ability to sort by exam type.

Understanding your needs, designed for you

Our flexible RightFit Service Agreements, education offerings, and innovative financing solutions can be adapted to meet your needs and strategic priorities.

* Philips is rated number one in overall service performance for ultrasound for 23 consecutive years in the annual IMV ServiceTrak survey in the USA.

** Optional. Not all services available in all geographies; contact your Philips representative for more information. May require service contract.

© 2016 Koninklijke Philips N.V. All rights are reserved. Philips reserves the right to make changes in specifications and/or to discontinue any product at any time without notice or obligation and will not be liable for any consequences resulting from the use of this publication. Trademarks are the property of Koninklijke Philips N.V. or their respective owners.



www.philips.com/rapm

Printed in The Netherlands.
4522 991 18251 * MAY 2016